

MEET THE NEXT GENERATION CAT® MINI EXCAVATORS



DESIGNED WITH
YOU IN MIND

CAT
LET'S DO THE WORK.™

WHAT CUSTOMERS ASKED FOR

CUSTOMERS ASKED US TO REWRITE THE RULES WHEN IT CAME TO DESIGNING THE CAT® MINI EXCAVATOR RANGE.

THEY TOLD US:

- **I need even more performance –**
I want to choose machines that provide maximum performance — particularly, with attachments
- **I want a better experience as an operator –**
I want a more comfortable, better-connected place to work
- **I want the best owning and operating costs –**
I want to reduce fuel, service and maintenance costs

WHAT WE DELIVERED

"HANDS DOWN A MUCH BETTER MACHINE.

– INSPIRED BY MIKE, FLEET MANAGER FOR F&H CONTRACTORS

THE GENERATION OF EXCELLENCE

TO DO YOUR BEST WORK, YOU NEED A COMFORTABLE MACHINE. THE NEXT GENERATION OF CAT MINI EXCAVATORS WAS DESIGNED WITH YOU IN MIND.

These high-performance machines are not only affordable, but they improve servicing, comfort and control.



COMFORT AND CONTROL

Putting the control in your hands, stick steer and cruise control make positioning and traveling in your excavator easy. Operator and attachment settings can be customized using the monitor to suit the task at hand. You can also choose to start the machine with the push of a button with an optional Bluetooth-enabled key.

AFFORDABLE

Productive and affordable Next Generation Cat Mini Excavators offer lower owning and operating costs. Now, you can spend less time and money on servicing, repairs and fuel. Common service parts across certain models and longer service intervals mean less downtime and more productive hours on the jobsite.

HIGH PERFORMANCE

Multifunctional and versatile, all mini excavator models are best in class — including increased efficiency and performance with greater digging, lifting and swing capacity.

NO-HASSLE SERVICING WITH TILT-UP CAB (ON SELECT MODELS)

Servicing and repairs are easy thanks to improved access with routine checkpoints at ground level, through side doors and a tilt-up cab or canopy on 1.5-3.5-ton models. Servicing time on all Next Generation Cat Mini Excavators is reduced, giving you more time to get the job done.

NEXT GEN FEATURES

STICK STEER

Stick steer control makes long days easier and so much more comfortable.

POWER IN YOUR HANDS

Moving around the jobsite is even easier with the Cat stick steer option. Easily switch from traditional travel controls with levers and pedals to joystick controls with the push of a button. You can control the machine just like a skid steer loader using the left-hand joystick. With the right-hand joystick, you can control the dozer blade or the boom and stick function.



AIR-CONDITIONED CAB

Work in luxury through the long, hot days when you choose the option of cool, clean air conditioning.

STAY COOL

You can control the air conditioner and heating through the LCD monitor to ensure your cab is comfortable. Air conditioning is offered as an option on all Next Generation Cat Mini Excavator cab machine models.

STAY CLEAN AND DUST-FREE

The sealed and pressurized cab design keeps dust out and clean air in for an improved operator environment.



NEXT GEN FEATURES

CRUISE CONTROL

When in stick steer mode, choose cruise control to travel in comfort.

TRAVEL IN STYLE

Stick steer and cruise control are standard features offered on all models. You can set the cruise control by pressing a trigger underneath the joystick – perfect for moving the machine across a large open site. You no longer have to put up with backaches at the end of the day from hunching over levers.



LCD MONITOR

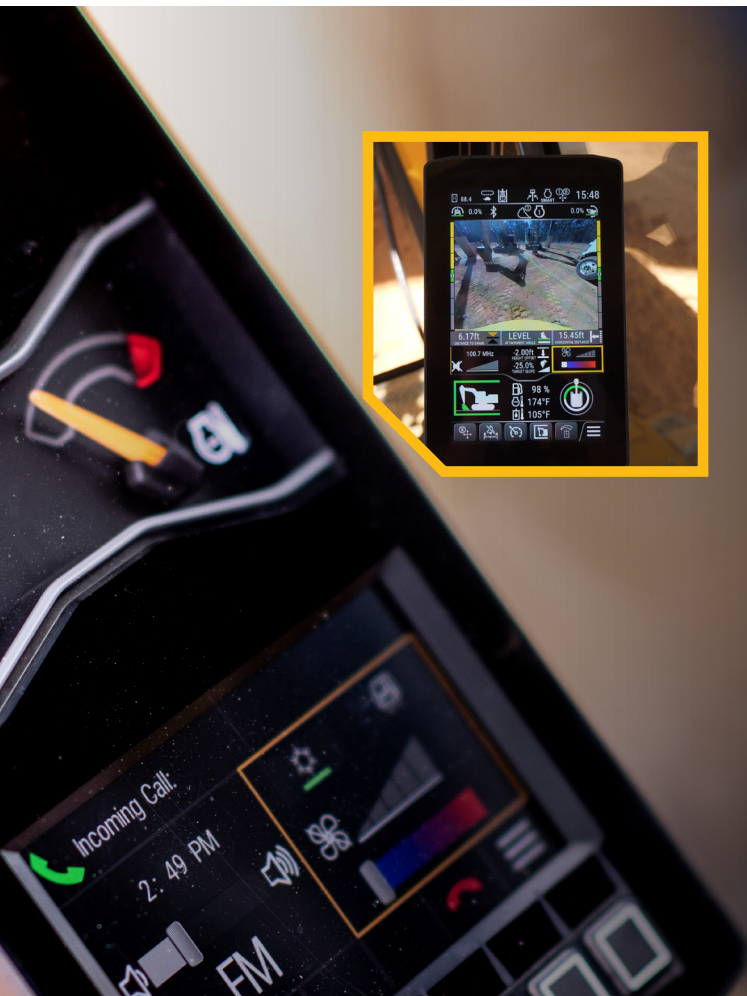
Customize your settings, receive calls and stream music all in one place.

TOTAL CONTROL

Adjust your settings, such as hydraulic speed, to suit the task at hand. You can also receive calls through the monitor and adjust the temperature in the cab. Bluetooth means you can take calls, hands-free.

OPTIONAL ADVANCED TOUCH SCREEN MONITOR

Full eight-inch touch screen display with high-definition graphics and integrated Site Reference System gives you pitch and roll of the machine chassis.



TECHNOLOGY IMPROVES PRODUCTIVITY

Cat technology helps you get more done in less time. With an intelligent suite of hardware, software and services, your Cat dealer can help you boost productivity, improve safety, save time and reduce costs.



CAT GRADE CAPABLE TECHNOLOGY FOR 3.5-10 TON MINI EXCAVATORS

THE RIGHT TECHNOLOGY FOR ANY JOB

Cat Grade is available for Next Generation Mini Excavators as an aftermarket automatics system that is easy to install, learn and use. Cat Grade with Advanced 2D or 3D gives you the ability to create, manage and grade simple to complex designs. Simply enter depth and slope, press auto and get to work. Contact your Cat dealer to discuss the best system and options for your fleet, operators and applications.



4 WAYS CAT GRADE DELIVERS RESULTS



REDUCED COSTS

Saves time, labor and fuel costs.



IMPROVED ACCURACY

Precise guidance reduces wasted effort.



BETTER OPERATOR EFFICIENCY

Experienced operators work more accurately than ever. New operators get up to speed more quickly.



ENHANCED SAFETY

Fewer site personnel are needed on the ground.

EASE OF USE FOR CAT MINI EXCAVATORS

From controlling grade and avoiding obstacles to setting operating envelope limits, Ease of Use features for Cat Mini Excavators are designed to make operating easier and more efficient, day in and day out.



EASE OF USE FEATURES FOR CAT MINI EXCAVATORS INCLUDE:

INDICATE

Allows operators to select a target depth and slope from the in-cab guidance system. The monitor then provides real-time, work-in-progress and distance-to-grade feedback.

E-FENCE

Set maximum depth, height, wall and/or swing boundaries to avoid structures, traffic or other nearby obstacles. E-Fence automatically constrains machine motion to your preset limits.

SWING ASSIST

Automatically stops machine swing at set points in truck loading, trenching and similar applications. Simply swing to the desired stopping point and activate using the machine monitor.

BUCKET ASSIST

Maintains the last known bucket angle and keeps the cut accurate in sloping, leveling, fine grading and trenching application using the machine monitor to increase efficiency.

Available for 306 CR, 307.5, 308 CR, 309 CR and 310 Next Generation Cat Mini Excavator models, Ease of Use boosts your performance and efficiency while reducing costs.

GAME-CHANGING FEATURES

**BENMOR RELIES ON EASE OF USE TECHNOLOGY
TO IMPROVE ITS BOTTOM LINE.**





“THE TECHNOLOGY ON THIS MACHINE HAS INCREASED OUR PRODUCTIVITY BY 25%.”

– BRIAN NORGE SR., BENMOR CONSTRUCTION

Benmor Construction uses Ease of Use for Next Generation Cat Mini Excavators to enhance efficiency.

SIMPLIFY YOUR OPERATION

The Ease of Use system is easy to learn, easy to operate and allows you to train operators on the job and keep production moving.

“The Ease of Use system is very easy to use and very easy to learn.”

WORK MORE EFFICIENTLY

Accurate sloping, leveling, fine grading and trenching means you can bid jobs tighter and meet your business goals with confidence.

“The Ease of Use system makes our crew more efficient; they no longer panic to meet a deadline.”

DO MORE WITH LESS

Utilizing Indicate helps you complete trenching tasks with fewer people. Grade can be set from the monitor without the need for an additional worker measuring grade on the ground.

WORK SAFELY

E-Fence constrains machine motion based on pre-set boundaries to help avoid obstacles such as underground cables and overhead power lines.

“Using Ease of Use on this machine, we’ve been able to increase production, decrease waste and we can save our customers money.”

1–2 TON NEXT GENERATION MINI EXCAVATORS

WORKING IN SMALL SPACES HAS NEVER BEEN SO EASY OR SO COMFORTABLE.

SAVE TIME AND MONEY

The 1–2 ton models come with:

- Sealed and pressurized cab with air conditioning and heating options available on 301.8 and 302 CR models for year-round comfort
- LCD monitor with Bluetooth radio and hands-free calling
- Stick Steer and cruise control for comfortable control and reduced operator fatigue
- Expandable undercarriage allows even more access to work sites short on space
- Tilt-up canopies and cabs allow for easier, quicker and less costly service
- Improved fuel efficiency, longer service intervals, and auto-idle and auto-engine shutdown provide up to 10% lower total ownership cost
- Up to 20% more performance than previous models — improvements in lift, swing, travel and multifunction, and strong dig performance help get the job done faster

301.5

- Gross Power 16.1 kW / 21.6 hp
- Transport Length 141.3 in / 3,590 mm (long stick)
- Transport Height 90.9 in / 2,310 mm (track width)
- Track Width 39 in / 990 mm retracted
51 in / 1,300 mm expanded
- Max. Operating Weight† 3,913 lb / 1,775 kg (canopy)
- Tail Swing 32.3 in / 820 mm
- Max. Dig Depth 100 in / 2,540 mm (long stick)
- Digging Force - Bucket 3,169.8 lbf / 14.1 kN

Standard tail swing



301.7 CR

- Gross Power 16.1 kW / 21.6 hp
- Transport Length 141.3 in / 3,590 mm (long stick)
- Transport Height 90.6 in / 2,300 mm
- Track Width 39 in / 990 mm retracted
51 in / 1,300 mm expanded
- Max. Operating Weight† 4,222 lb / 1,915 kg (canopy)
- Tail Swing 25.6 in / 650 mm
- Max. Dig Depth 100.0 in / 2,540 mm (long stick)
- Digging Force - Bucket 3,461.9 lbf / 16.2 kN

Compact radius



301.8

- Gross Power 16.1 kW / 21.6 hp
- Transport Length 146.1 in / 3,710 mm (long stick)
- Transport Height 90.6 in / 2,300 mm
- Track Width 39 in / 990 mm retracted
51 in / 1,300 mm expanded
- Max. Operating Weight† 4,473 lb / 2,029 kg (cab)
- Tailswing 39.2 in / 995 mm
- Max. Dig Depth 101.2 in / 2,570 mm (long stick)
- Digging Force - Bucket 4,406.3 lbf / 19.6 kN

Standard tail swing



302 CR

- Gross Power 16.1 kW / 21.6 hp
- Transport Length 152.8 in / 3,880 mm (long stick)
- Transport Height 90.6 in / 2,300 mm
- Track Width 43 in / 1,090 mm retracted
55 in / 1,400 mm expanded
- Max. Operating Weight† 4,987 lb / 2,262 kg (cab)
- Tail Swing 29.5 in / 750 mm
- Max. Dig Depth 101.2 in / 2,570 mm (long stick)
- Digging Force - Bucket 4,406.3 lbf / 19.6 kN

Compact radius



3 TON NEXT GENERATION MINI EXCAVATORS

SMALL BUT MIGHTY, THESE MACHINES PROVIDE STRENGTH WHEN YOU NEED IT.

SAVE TIME AND MONEY

The 3 ton models come with:

- Canopy or cab options — sealed and pressurized cab with air conditioning and heating options available on all Next Generation Cat Mini Excavator models for year-round comfort
- LCD monitor with Bluetooth radio and hands-free calling
- Stick Steer and cruise control for comfortable control and reduced operator fatigue
- Tilt-up canopies and cabs for easier, quicker and less costly service
- Compact radius design enables access to work in the tightest spaces
- Expandable undercarriage available on the 302.7 CR allows even more access to work sites short on space
- Angle blade option available on 303.5 for finished grading and easier backfilling applications
- Improved fuel efficiency, longer service intervals, and auto-idle and auto-engine shutdown provide up to 10% lower total ownership cost
- Up to 20% more performance than previous models — improvements in lift, swing, travel and multifunction, and strong dig performance help get the job done faster

302.7 CR

- Gross Power 24.7 hp / 18.4 kW
- Transport Length 172.8 in / 4,390 mm (long stick)
- Transport Height 99.6 in / 2,530 mm
- Track Width 53.3 in / 1,355 mm retracted
70.1 in / 1,780 mm expanded
- Max. Operating Weight† 8,070 lb / 3,660 kg (cab)
- Tail Swing 30.5 in / 775 mm
- Max. Dig Depth 104.3 in / 2,650 mm (long stick)
- Digging Force - Bucket 5,238 lbf / 23.3 kN



303 CR

- Gross Power 24.7 hp / 18.4 kW
- Transport Length 179.5 in / 4,560 mm (long stick)
- Transport Height 97.6 in / 2,480 mm
- Track Width 61 in / 1,550 mm
- Max. Operating Weight† 7,817 lb / 3,545 kg (cab)
- Tail Swing 30.5 in / 775 mm
- Max. Dig Depth 116.1 in / 2,950 mm (long stick)
- Digging Force - Bucket 6,385 lbf / 30.5 kN



Compact radius



303.5 CR

CAT TECHNOLOGY: CAT GRADE CAPABLE

- Gross Power 24.7 hp / 18.4 kW
- Transport Length 190.9 in / 4,850 mm (long stick)
- Transport Height 97.6 in / 2,480 mm
- Track Width 70.1 in / 1780 mm
- Max. Lift Capacity†† 2,965 lb / 1,345 kg
- Max. Operating Weight† 9,239 lb / 4,190 kg (cab)
- Tail Swing 35.0 in / 890 mm
- Max. Dig Depth 122.4 in / 3,110 mm (long stick)
- Digging Force - Bucket 7,419 lbf / 33.0 kN



Compact radius



† Operating weights based on most common configuration, excludes bucket.

†† Lifting capacity listed is the Maximum Configuration over front, blade down, at 3 m Lift Point radius with long stick, no bucket. Lifting capacity is also dependent upon other variables such as machine configuration, counterweight, lifting point, application, work tool, track and surface type, etc.

4–6 TON NEXT GENERATION MINI EXCAVATORS

COMPACT. CONVENIENT.

AND UP FOR THE JOB.

The 4–6 ton models come with:

- Canopy or cab options — sealed and pressurized cab with air conditioning and heating options available on all Next Generation Cat Mini Excavator models for year-round comfort
- LCD monitor with Bluetooth radio and hands-free calling
- Stick steer and cruise control for comfortable control and reduced operator fatigue
- Angle blade option for finished grading and easier backfilling applications
- Reduced radius tail swing design on the 304 provides exceptional stability with a maximum width of 67 in (1,700 mm)
- Compact radius design on the 305 CR and 306 CR enables access to work in even the tightest spaces
- 306 CR available with an Extra Tool Carrier (XTC)
- Improved fuel efficiency, longer service intervals, and auto-idle and auto-engine shutdown provide up to 10% lower total ownership cost
- Up to 20% more performance than previous models — improvements in lift, swing, travel and multifunction, and strong dig performance help get the job done faster

304 CAT TECHNOLOGY: CAT GRADE CAPABLE

- Gross Power 48.4 hp / 36.1 kW
- Transport Length 194.9 in / 4,950 mm (long stick)
- Transport Height 100.0 in / 2,540 mm
- Track Width 66.9 in / 1700 mm
- Max. Lift Capacity^{††} 4,262 lb / 1,933 kg
- Max Operating Weight[†] 9,867 lb / 4,475 kg (cab)
- Tail Swing 47.4 in / 1,205 mm
- Max. Dig Depth 138.2 in / 3,510 mm (long stick)
- Digging Force - Bucket 8,588 lbf / 38.2 kN

Standard tail swing



305 CR

CAT TECHNOLOGY: CAT GRADE CAPABLE

- Gross Power 48.4 hp / 36.1 kW
- Transport Length 210.2 in / 5,340 mm (long stick)
- Transport Height 100.4 in / 2,550 mm
- Track Width 78 in / 1981 mm
- Max. Lift Capacity^{††} 7,041 lb / 3,193 kg
- Max. Operating Weight[†] 12,688 lb / 5,754 (cab)
- Tail Swing 43.1 in / 1,095 mm
- Max. Dig Depth 144.5 in / 3,670 mm (long stick)
- Digging Force - Bucket 11,061 lbf / 49.2 kN



Compact radius



306 CR

CAT TECHNOLOGY: EASE OF USE, CAT GRADE CAPABLE

- Gross Power 57.9 hp / 43.2 kW
- Transport Length 234 in / 5,950 mm (long stick)
- Transport Height 95 in / 2,410 mm
- Track Width 78 in / 1981 mm
- Max. Lift Capacity^{††} 8,181 lb / 3,710 kg
- Max. Operating Weight[†] 15,766 lb / 7,150 kg (cab)
- Tail Swing 58 in / 1,475 mm
- Max. Dig Depth 162 in / 4,110 mm (long stick)
- Digging Force - Bucket 11,578 lbf / 51.5 kN



Compact radius



[†] Operating weights based on most common configuration, excludes bucket.

^{††} Lifting capacity listed is the Maximum Configuration over front, blade down, at 3 m Lift Point radius with long stick, no bucket. Lifting capacity is also dependent upon other variables such as machine configuration, counterweight, lifting point, application, work tool, track and surface type, etc.

7–10 TON NEXT GENERATION MINI EXCAVATORS

CHOOSE FROM A POWERFUL RANGE OF OPTIONS.

MORE PERFORMANCE. LESS EFFORT.

The 7–10 ton models come with:

- Sealed and pressurized cab with air conditioning and heating options available on all Next Generation Cat Mini Excavator models for year-round comfort
- LCD monitor with Bluetooth radio and hands-free calling
- Stick steer and cruise control for comfortable control and reduced operator fatigue
- Compact radius design on the 308 CR and 309 CR enables access to work in even the tightest spaces
- The 309 CR offers a standard dedicated auxiliary hydraulic pump ideal for running power-hungry attachments while allowing the machine to simultaneously travel and multifunction without a reduction in power
- Improved fuel efficiency, longer service intervals, and auto-idle and auto-engine shutdown provide up to 10% lower total ownership cost
- Up to 20% more performance than previous models—improvements in lift, swing, travel and multifunction, and strong dig performance help get the job done faster

307.5

CAT TECHNOLOGY: EASE OF USE, CAT GRADE CAPABLE

- Gross Power 57.9 hp / 43.2 kW
- Transport Length 240.9 in / 6,120 mm (long stick)
- Transport Height 100.4 in / 2,550 mm
- Track Width 86.6 in / 2200 mm
- Max. Lift Capacity^{††} 7,938 lb / 3,600 kg
- Max. Operating Weight[†] 17,905 lb / 8,120 kg
- Tail Swing 70.9 in / 1,800 mm
- Max. Dig Depth 182.8 in / 4,642 mm (long stick)
- Digging Force - Bucket 12,272 lbf / 54.6 kN

Standard tail swing



308 CR / 308 CR VAB

**CAT TECHNOLOGY: EASE OF USE,
CAT GRADE CAPABLE**



- Gross Power 74.3 hp / 55.4 kW
- Transport Length 270.6 in / 6,872 mm (long stick)
253.9 in / 6,450 mm (VAB)
- Transport Height 89 in / 2,260 mm
97.4 in / 2,475 mm (VAB)
- Track Width 90.6 in / 2301 mm
- Max. Lift Capacity^{††} 8,478 lb / 3,845 kg
12,624 lb / 5,725 kg (VAB in, standard stick)
- Max. Operating Weight[†] 20,077 lb / 9,105 kg
20,385 lb / 9,245 kg (VAB out, standard stick)
- Tail Swing 57.1 in / 1,450 mm
- Max. Dig Depth 182.8 in / 4,642 mm (long stick)
150.2 in / 3,815 mm (VAB in, standard stick)
136.2 in / 3,460 mm (VAB out, standard stick)
- Digging Force - Bucket 13,946 lbf / 62.0 kN



309 CR / 309 CR VAB

**CAT TECHNOLOGY: EASE OF USE,
CAT GRADE CAPABLE**



- Gross Power 74.3 hp / 55.4 kW
- Transport Length 277.6 in / 7,052 mm (long stick)
257.7 in / 6,495 mm (VAB)
- Transport Height 89 in / 2,260 mm
97.4 in / 2,475 mm (VAB)
- Track Width 97.2 in / 2469 mm
- Max. Lift Capacity^{††} 8,478 lb / 3,845 kg
12,705 lb / 5,762 kg (VAB in)
- Max. Operating Weight[†] 21,091 lb / 9,565 kg
21,477 lb / 9,740 kg (VAB, standard stick)
- Tail Swing 57.1 in / 1,450 mm
- Max. Dig Depth 182.8 in / 4,642 mm (standard stick)
150.2 in / 3,815 mm (VAB in)
136.2 in / 3,460 mm (VAB out, standard stick)
- Digging Force - Bucket 13,946 lbf / 62.0 kN



310 **CAT TECHNOLOGY: EASE OF USE, CAT GRADE CAPABLE**



- Gross Power 74.3 hp / 55.4 kW
- Transport Length 269.7 in / 6,850 mm
- Transport Height 100.4 in / 2,550 mm
- Track Width 97.2 in / 2469 mm
- Max. Lift Capacity^{††} 11,973 lb / 5,430 kg
- Max. Operating Weight[†] 22,451 lb / 10,182 kg
- Tail Swing 70.9 in / 1,880 mm
- Max. Dig Depth 205.2 in / 5,211 mm
- Digging Force - Bucket 17,459 lbf / 77.7 kN



[†] Operating weights based on most common configuration, excludes bucket.

ONE DO-IT-ALL MACHINE

ROD HENRY RELIES ON HIS CAT 306 CR TO DO
SOME HEAVY WORK IN SMALL SPACES.





ROD HENRY CONSTRUCTION (RHC) IS A FAMILY-OWNED BUSINESS THAT SPECIALIZES IN THE INSTALLATION OF AEROBIC SYSTEMS, SEPTIC SYSTEMS AND STORM SHELTERS IN OOLOGAH, OKLAHOMA, USA. THIS TYPE OF WORK REQUIRES HIGH PERFORMANCE AND VERSATILITY IN TIGHT QUARTERS. IT TURNED TO THE CAT 306 CR MINI EXCAVATOR.

CLASS-LEADING LIFT CAPACITY

Offering big performance, the Cat 306 CR delivers class-leading lift performance of up to 8,181 lb (3,710 kg) at a 9.8-ft (3-m) radius. Enhanced uphill swing torque and reduced cycle times provide greater productivity and efficiency for RHC's operation.

IMPROVED CONTROL IS IN YOUR HANDS

Rod is able to switch easily from conventional lever/foot-pedal steering controls to the Cat exclusive stick steer system with the push of a button.

"Stick steer is awesome. I can haul it around easily."

STRETCH OUT IN A ROOMIER CAB

As a nimble, family-owned operation, Rod wants his operators to be comfortable in the cab all day long. The sealed and pressurized cabin lowers in-cab operating noise levels to 72 dB(A) and is heated and air-conditioned to elevate comfort, regardless of outside temperatures.

"There's so much room in the cab, which makes the visibility better. It's also airtight and quiet."

DO MORE WITH LESS

RHC was able to reduce the number of machines on site with the quick coupler system, which allows for work tool changes in a matter of seconds.

"The quick coupler is amazing. Previously, I would have had to bring out two machines."

Straight blade, angle blade and extra tool carrier (XTC) configurations further expand the flexibility of the Cat 306 CR Mini Excavator.

FEEL SUPPORTED

Cat dealers can deliver maintenance services that keep a fleet in good condition, along with a Customer Value Agreement (CVA) which offers hassle-free business plans customized to your business needs to help you get the most from your equipment and maximize your investment.

"My Cat dealer has been phenomenal. It doesn't matter where I am, my salesman will bring me a tube of grease if I call and ask him."

CAT AFTERMARKET SOLUTIONS





MAINTENANCE AND CAT PARTS

Get the most out of your investment by maintaining your mini excavator with genuine Cat parts—the only parts designed specifically for your machine. Increase uptime and ensure optimum performance from your equipment.

CAT UPGRADE KITS

Upgrade your machine based on your needs in the field. From improving safety with cab guarding kits to increasing versatility with secondary auxiliary lines and hydraulic quick couplers, explore the full range of upgrade kits for your mini excavator at parts.cat.com.

CAT ATTACHMENTS

With a full line of Cat mini excavator attachments, you can do a lot more than dig. From multiple bucket options to match your applications and ground conditions to hydromechanical tools like hammers, mulchers and grapples, Cat attachments give you true versatility.

CAT DEALER SERVICE

Cat customers are supported by the largest, most experienced dealer network in the industry. When you work with a Cat dealer, you get more than basic maintenance or parts. You get a personal partner who will do whatever it takes to help you succeed.

CAT CUSTOMER VALUE AGREEMENT

A Customer Value Agreement helps you control ownership costs over the life of your machine and gives you the peace of mind knowing you have access to genuine Cat parts for replacement, helping you reduce downtime and improve productivity.

To find out more about the new range of Next Generation Cat Mini Excavators,
contact your local Cat dealer or visit www.cat.com.



© 2023 Caterpillar. All Rights Reserved. CAT, CATERPILLAR, LET'S DO THE WORK, their respective logos, "Caterpillar Corporate Yellow," the "Power Edge" and Cat "Modern Hex" trade dress, as well as corporate and product identity used herein, are trademarks of Caterpillar and may not be used without permission.